







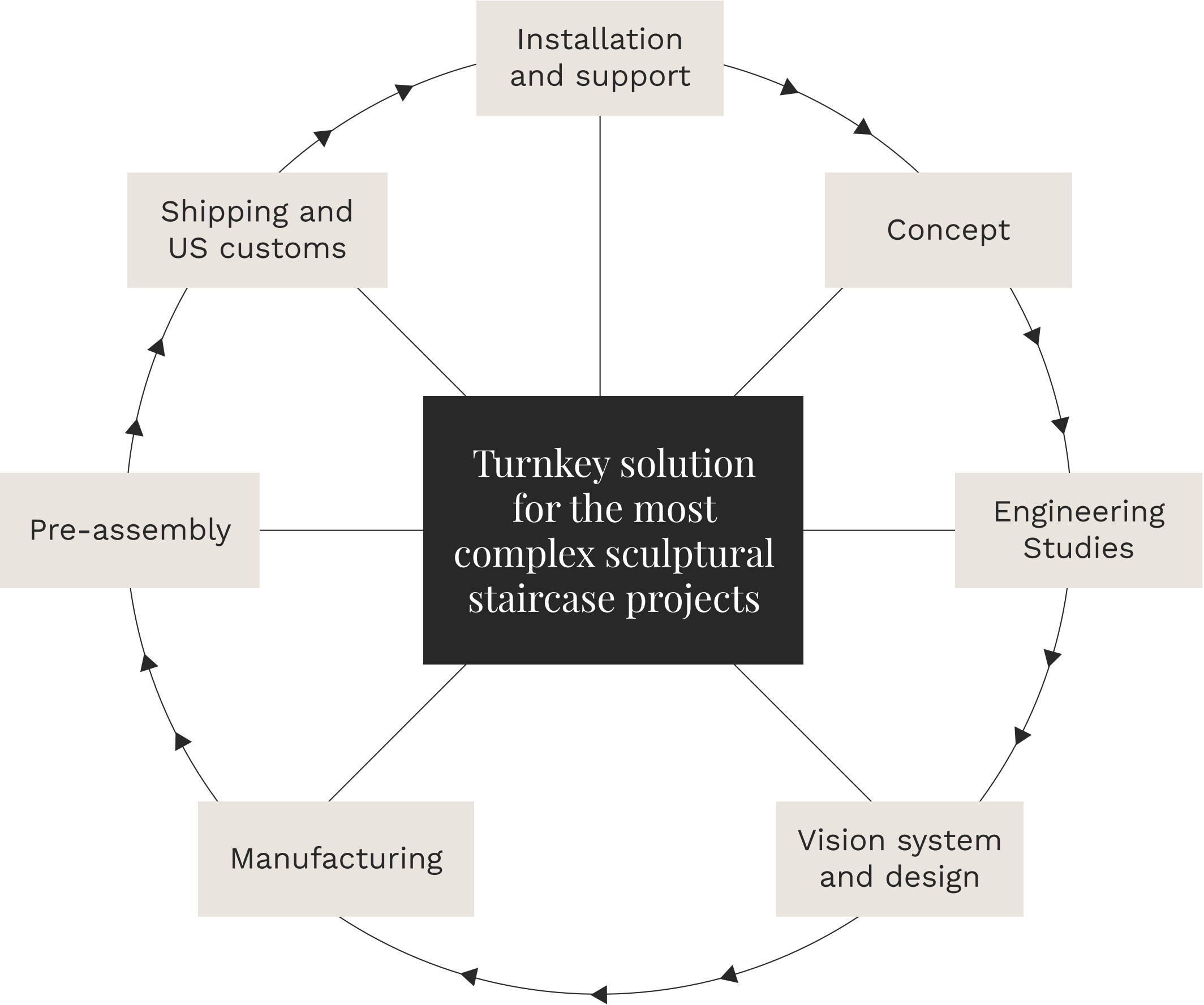
Founded in 1914, Marretti Italy is an *award-winning, product-led* designer and manufacturer of *sculptural staircases* for hospitality and commercial spaces worldwide.



Our team is engineering-led using leading-edge technology to create *unique & innovative* designs with handcrafted artisanship.



We work in close collaboration with architects, designers, developers, and general contractors. Our process is a turnkey solution from concept to feasibility engineering study, system design and manufacturing as well as expert installations and customer support service.



Marretti Italy operates
over *54,000 square feet*
of state-of-the-art
manufacturing facilities
across two locations in Italy
Florence and Modena

Production

These manufacturing plants are equipped to work with a variety of materials, including wood, stainless steel, glass, marble, and more. The advanced manufacturing process features a robotic processing center (CNC) for precision work, as well as dedicated departments for polishing, packaging, and assembly.

Triple Loop Helix Staircase with Copper Finish

The Triple Loop Helix Staircase is the latest Marretti creation, designed to become a monumental centerpiece for luxury hospitality environments.

Its fluid, sculptural form captivates attention, while the rich copper finish adds warmth and sophistication to any space.

This design masterfully juxtaposes sleek marble steps with the bold, copper-clad guard structure, creating a striking visual dialogue between texture and form.

01

02

Silver Sterling Coated Structure

This staircase features a sleek box structure crafted from polished stainless steel, finished in silver. The design highlights rounded corners on the underside, seamlessly flowing with the natural contours of the staircase.

The external railing consists of 3/8" + 3/8" curved ultra-clear structural glass, recessed into the framework for a clean, minimalist look. On the interior side, a polished stainless steel convex helical band, also silver-coated, is paired with a flat handrail that combines comfort with style.

The steps are made from solid walnut wood, and are illuminated by integrated LED lighting on the underside, adding a soft, modern touch to the design.



03

Single Sheet Steel Structure

This staircase is crafted from a single, continuous sheet of steel with a thickness of 5/16", offering a unique visual impact.

With an 8' diameter and 11' height, its minimalist design creates a modern, refined presence in any hospitality setting.

The solid wood steps are paired with LED on the side, casting a soft glow that highlights the structure's elegant form.

The handrail is integrated as a flat forming element to maintain the staircase's continuous design.



04

Helix Staircase White Corian Structure

This helical staircase showcases a modern white Corian structure, complemented by quartz steps that feature a subtle purple hue, offering a refined contrast within the design.

The seamless form incorporates two oval-shaped loops with a 27' diameter, providing versatility in sizing to suit both commercial and hospitality spaces.

The handrail is recessed, while integrated LED lights add a soft glow and ambiance.



05

Double Loop Bronze-Cladding Helix Staircase

This helix staircase features a 6' wide opening, revealing the smooth texture of its first three marble steps from afar.

The 3' tall boxed structure is finished with bronze-cladding, transforming the staircase into a sculptural showstopper within the hospitality space.

LED lights can be incorporated in the handrails, which can be recessed or visible.



Helix Staircase in Blackened Steel Roll

06



The interior structure of this helix staircase is crafted from a 2" thick boxed system of Hot Rolled Blackened Steel, offering a bold, robust aesthetic.

The exterior is finished with 4" thick bronzed brass.

The recessed handrail, integrated into the structure, enhances its sleek profile, with LED lighting placed both within the steps and along the handrail for a subtle, inviting glow.

Glossy RAL Color Helix Staircase



This helix staircase features 3 1/8" thick boxed stringers which provide a robust foundation, complemented by handrails crafted from circular tubing with a 1 1/2" diameter, coated in a layer of oxidized bronze. The steps and risers find their support in press-folded iron sheets, arranged in a ribbon-like structure, creating a visually seamless ascent.

A distinctive feature of this staircase is its continuous slide at the lower part, elegantly reconnecting the two lateral structures. The entire structure is unified into

a monolithic block, skillfully concealing any visible fastenings or joints. The glossy red resin, applied on-site by a specialized artisan, further enhances the staircase's aesthetic appeal.

Versatility is a key aspect of this design, as the structure can be tailored to various preferences. Options include polished or satin stainless steel, gold-plating, or a coating of oxidized bronze. The steps offer a choice between different wood essences like beech, oak, walnut, or teak.



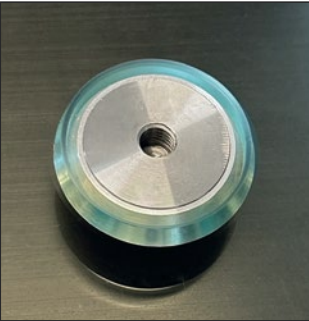
Custom Made Tempered Glass & Stainless-Steel Staircase

This custom glass staircase is a fusion of transparency and strength. Built with a brushed-finish AISI 304 stainless steel structure, this staircase features extra-clear tempered glass steps that are 7' wide and 2" thick.

The top surface of each step is treated with an anti-slip coating. The innovative design eliminates the need for drilled holes, with hooks recessed directly into the glass, ensuring a smooth, uninterrupted surface.

The railing, also crafted from 1½" thick extra-clear tempered glass, adds to the sleek and minimalist aesthetic.

Each glass component is laminated with SGP plastic (SentryGlas® by Dupont) for enhanced strength and durability.

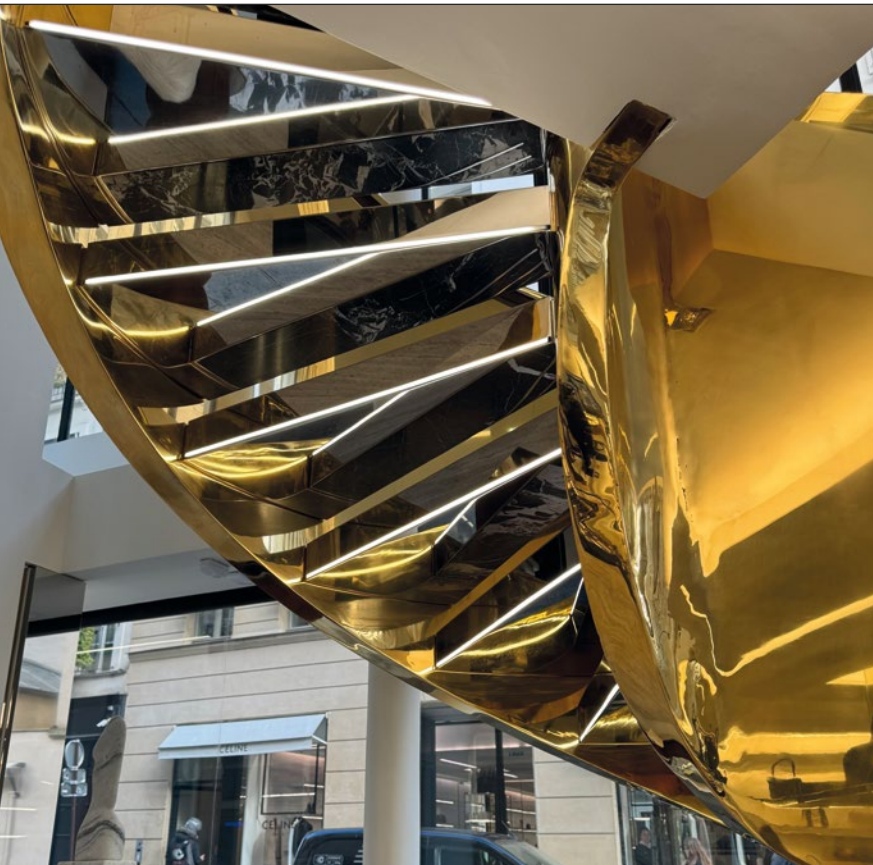


Patented stainless steel fitting, recessed into the glass



Solid top glass surface without holes





24 Karat Gold-Plated Staircase

This helical staircase has a double lateral structure made of polished stainless steel boxed stringers, covered in 24K gold with steps made of 3' wide and 2" thick grey marble.

The steps are supported by polished stainless steel and are equipped with LED lighting both on the steps and inside the groove of the handrail carved into the structure's thickness.

The staircase has a single-piece design that allows for fastening only at the start and end points.





Marretti Usa Inc.



Starrett-Lehigh Building
601 West 26th St. STE M228
New York, NY 10001

CONTACT

855-678-2477
212-255-5565
info@marrettiusa.com

Marretti Italy

Via del Crocifisso, 48
50058 Signa, Florence
Italy

CONTACT

+39 (0)55-873-4735
info@marretti.it

